

LOP-5131

PLASMA CONSOLE

LIFT FEATURES:

- *Fully assembled.
- *1 year in home parts and labor warranty.
- *Radio Frequency Remote.
- *Universal TV mounting bracket included.
- *Auto reversing safety mechanism.
- *Heavy duty rack and pinion drive system.
- *Smooth and stable travel.
- *Nearly silent operation.
- *Welded steel construction.
- *Thermal overload protection.
- *Built in wire management.
- *Patent Pending.

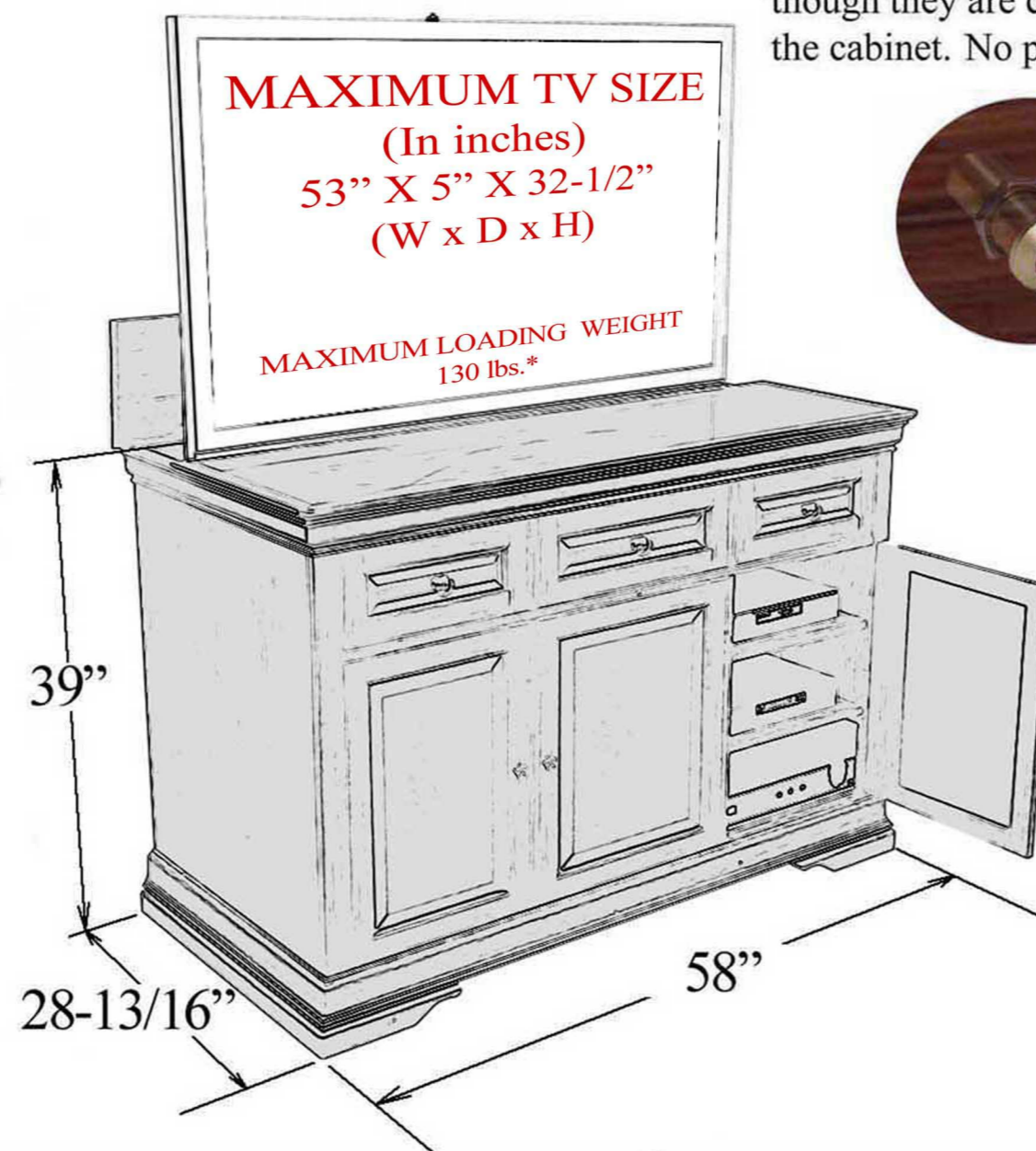
CABINET FEATURES:

- * Fully assembled.
- * All doors incorporate interchangeable wood or speaker cloth panels (both are included with your purchase).
- * Built-in Infrared Relay System.
- * Hand selected China cherry solids and cathedral cherry veneers.
- * Multi-step stain and scratch resistant finish.
- * Fully ventilated to allow for generous air circulation.



PERSPECTIVE

Infrared relay system provides a window from your handheld remotes to your TV and audio components even though they are concealed inside the cabinet. No programming required!



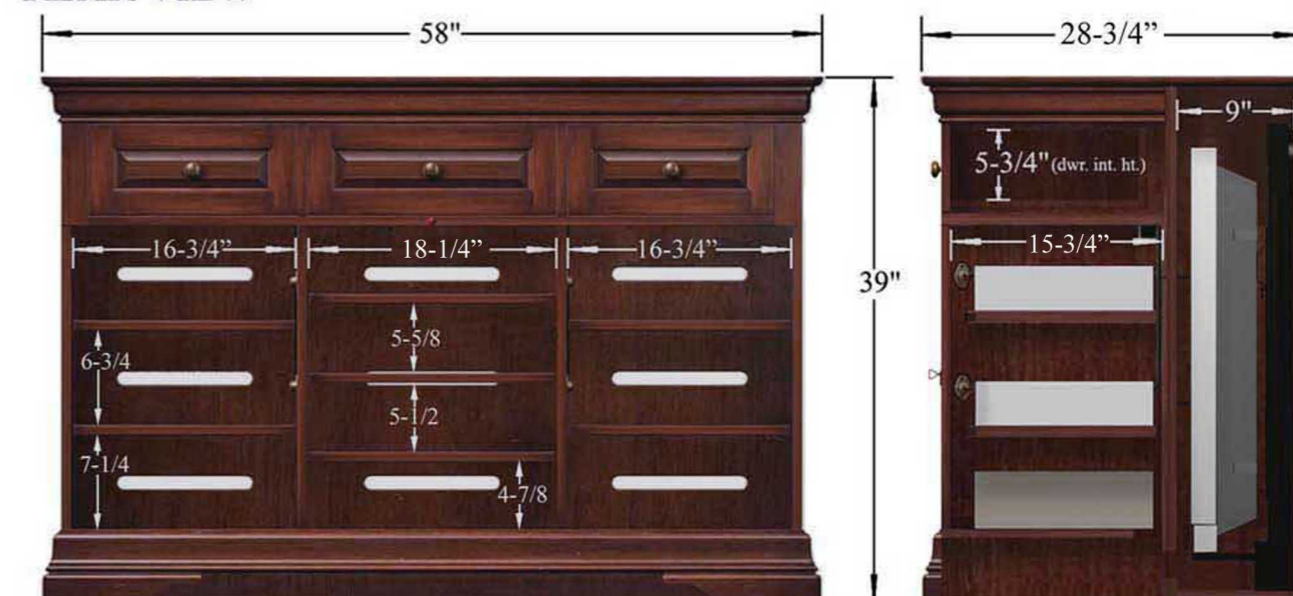
TOP VIEW



REAR VIEW



FRONT VIEW
(shown with wooden panels on doors)



FRONT VIEW (interior)



SIDE VIEW